

Affinity Mobile Commode



VBA811/VBA811

Assembly and Operating Instructions

N.B. This equipment must be installed by a competent person and a risk assessment undertaken as to the suitability of the chair for the particular user.

120kg weight limit

Do not exceed the weight limit stated as doing so could put the user at risk

ASSEMBLY

The chair is provided to you packed in cube form. Please examine all components for any visible damage before use. If you see any damage or suspect a fault, please contact your supplier immediately.

In this case, please do not use your product as it may compromise the safety of the user.

NB. When transferring sideways from the chair, a risk assessment may be needed as to the suitability of the chair for the particular user.

NB. Arm rests are for comfort only.

NB. Indoor use only.

NB. When pushing the chair, attendants must not 'ride' (i.e. put all their weight) on the pram handle.

The package contains the following components:

- The main frame with two braked castors (front) attached
- Detachable grey horseshoe aperture seat (attached to the main frame)
- Grey horseshoe seat infill
- Detachable back
- Detachable footrests
- 580 mm diameter puncture proof tyres (self propelled model only)

PLEASE READ THESE FOLLOWING INSTALLATION INSTRUCTIONS CAREFULLY.

1. Remove all contents from the box
2. Remove the white cardboard packing tubes taped around the frame (this is to prevent damage during transit and not part of the chair)
3. Place the assembled base on a level floor
4. At the rear of the chair (or removable back) you will see two black threaded wheel nuts; undo the wheel nuts and remove from the frame
5. Place the two legs of the back into the locating holes at the rear of the chair frame
6. Re-insert the black nuts through the frame and back and secure by turning the black lock nuts until you feel the nut biting against the leg of the back
7. Do not over tighten
8. Do not use tools as it is only necessary to have the back secured finger tight

FOOTRESTS

Your footrests may be packed separately to the main chair. Please examine your footrests for any visible damage before use. If you see any damage or suspect a fault, please contact your supplier immediately. In this case, please do not use your product as it may compromise your safety.

1. Remove the footrests from their packaging.
2. You will see on each of the front legs of the main frame about 150 mm high from the castor 2 retaining lugs either side.
3. Take the footrests and align the holes in the inverted 'U' section with the lugs and lower down into place.
4. Rotate the footrests towards the commode so that they clip into place.

BRAKED CASTORS

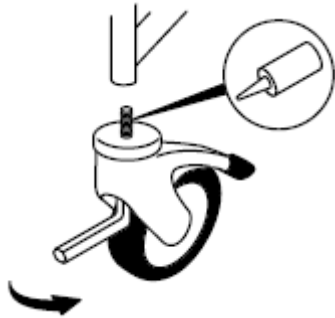
Do not attempt to push the shower chair with the brakes applied, this will damage the brake mechanism and may compromise the safety of the user.

NB. Please regularly check the castors and the brakes for proper operation.

CASTOR REPLACEMENT

NB: We recommend castor replacement is done by a qualified technician

1. Remove the existing castors using a short reach 8 mm Allen key.
2. Replacement M12x35 bolts are provided with each castor, the removed bolts should be disposed of.
3. Apply a thread locking fluid to the bolt to lock the assembly securely. .
4. Assembly should be screwed tightly and the castor should sit flush with the frame.(i.e. there should be no gap between the castor and the frame)



NB: Where leg extension pins are in place it is recommended that the extension pins are replaced at the same time as the castor.

For further technical details contact RMW.

SEAT

This commode comes with a detachable black horseshoe seat (see Fig. 1) as standard.

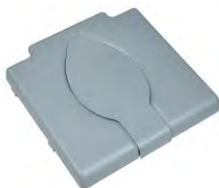


Fig. 1

APERTURE COVER

When transferring to and from the Bawl Shower Chair be careful not to apply weight to the black removable toileting aperture cover. This may cause the padded aperture cover to push through.



NB. The padded aperture cover is not designed to be load bearing.

SELF PROPELLED WHEELS

On the self propelled model, the 580 mm diameter rear wheels are packed separately. The wheels are attached to the frame by the large square silver brackets on the rear vertical legs of the frame.

1. Remove the wheels from their packaging.
2. Hold the wheel in position against the silver bracket so that the centre of the wheel is against the locating hole in the bracket.
3. Press the button in the centre of the wheel to pass the locking bar axle through the bracket into the frame. Do not apply excessive force – when positioned correctly it should slide gently into the locating hole.
4. Continue to apply pressure until the button clicks into place and will move no further.
5. Check that the wheel is correctly installed by pulling it away from the frame – if correctly installed the wheel will remain attached: If the wheel comes away from the frame follow steps 2 – 4 again until it is correctly installed.

COMMODE BUCKET

To remove the commode bucket, simply slide the bucket out from the chrome runners at the rear of the commode. Cover the top of the bucket to avoid splashing, carefully dispose of the contents into a proper sluice or WC. Never use an open drain, sink or basin. This could cause a serious health risk. To avoid the possibility of trapping, do not slide the commode pan on or off the rails while somebody is sitting on the chair.

Clean out the residue with a suitable disinfectant and refit to the commode after use

NB. Always remove the commode bucket prior to removing the black horseshoe seat.

CLEANING

Do not use abrasive cleaners as this could damage the surface of the equipment. For cleaning, wipe with a clean cloth soaked in detergent solution and wring out. Depending on the detergent manufacturer's instructions the solution may be heated.

Wipe all surfaces of the equipment and the cloth should be re-immersed periodically and the detergent changed frequently. The detergent should be rinsed or wiped off using a clean cloth immersed in clean water and wrung out.

To disinfect make sure the equipment has been cleaned and dried and then wipe over with a clean cloth and a compatible liquid disinfectant. After disinfecting clean with clean water and dry.

When using detergent or disinfectants then please refer to manufacturers' instructions and if unsure then consult your local Infection Control Specialist for advice.

This product is not suitable for cleaning with moist heat or autoclaving.

APERTURE COVER

When transferring to and from the commode, be careful not to apply weight to the black removable toileting aperture cover. This may cause the padded aperture cover to push through.

NB. The padded aperture cover is not designed to be load bearing.

REISSUE

If you reissue or are about to reissue this product, please thoroughly check all components for their safety, also check all upholstery for security, splits, etc. If in any doubt, please do not issue or use, but immediately contact your supplier for service support.

When reissuing, a risk assessment may be required as to the suitability of the chair for a particular user.

MAINTENANCE

Please make a safety check of the product at regular intervals or if you have any concerns, paying particular attention to the castors.

IMPORTANT INFORMATION

The information given in this instruction booklet must not be taken as forming part of or establishing any contractual or other commitment by Rehab and Mobility Wholesalers Pty Ltd or its agents or its subsidiaries and no warranty or representation concerning the information is given.

Please exercise common sense and do not take any unnecessary risks when using this product; as the user you must accept liability for safety when using the product.

Please do not hesitate to contact the person who issued this product to you or the manufacturer (detailed below) if you have any queries concerning the assembly/use of your product.

Rehab and Mobility Wholesalers
6-8 Imboon Street, Deception Bay, QLD, 4508

Telephone: 1300 368 085

Web: www.rehabandmobility.com.au

Email: qld@rehabandmobility.com.au